

# MONTHLY MEMBERSHIP PROGRESS REPORT

District 11 A2

Results as of: 4/30/2025

GMT:

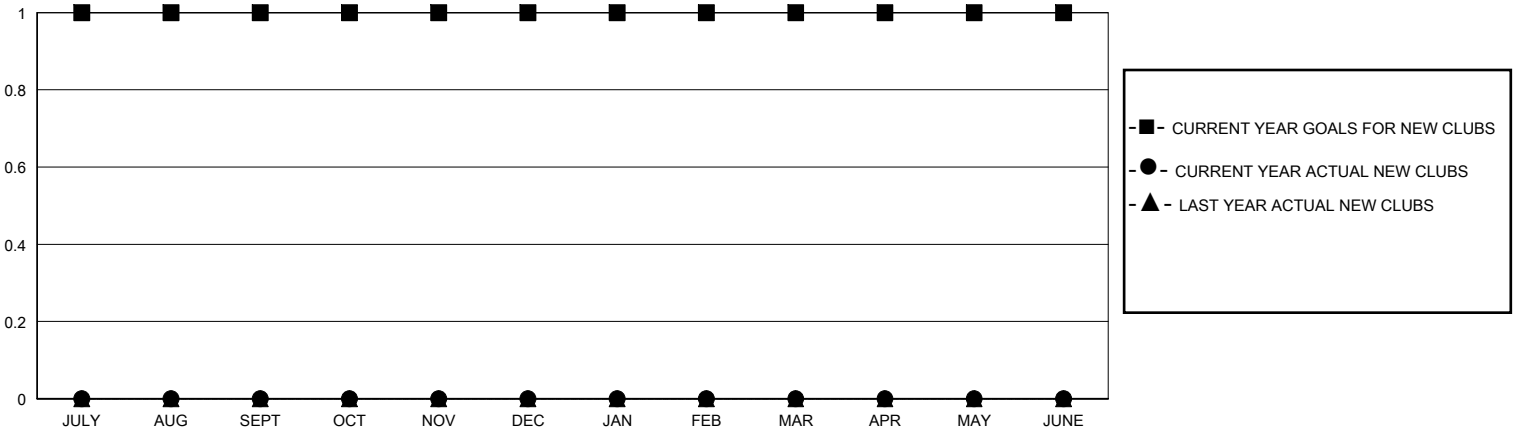
LOCATION MICHIGAN

GMT CA

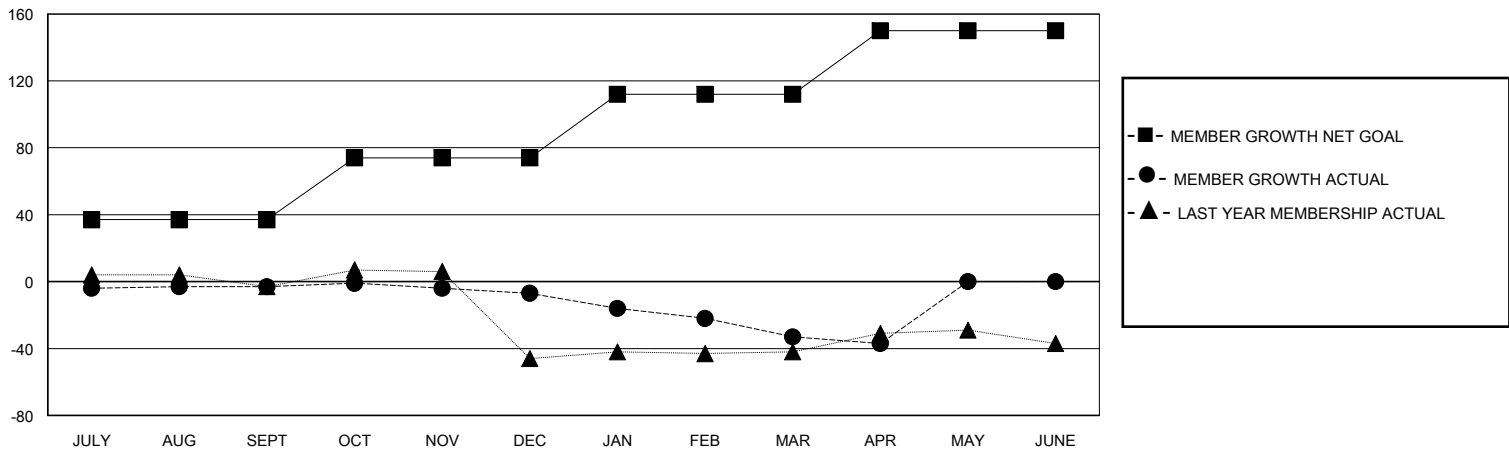
Clubs			
RESULTS FOR 2024-2025			
QUARTER	NEW CLUB GOAL	NEW CLUBS	DROPPED CLUBS
JULY/AUG/SEPT	1	0	0
OCT/NOV/DEC	0	0	0
JAN/FEB/MAR	0	0	1
APR/MAY/JUNE	0	0	0

Members			
RESULTS FOR 2024-2025			
QUARTER	MEMBER GROWTH NET GOAL	MEMBER GROWTH ACTUAL	DROPPED MEMBERS ACTUAL (including transfers)
JULY/AUG/SEPT	37	31	32
OCT/NOV/DEC	37	28	26
JAN/FEB/MAR	38	25	48
APR/MAY/JUNE	38	10	11

GOALS AND ACTUAL NEW CLUBS CUMULATIVE



GOALS AND ACTUAL MEMBERS CUMULATIVE



DROPPED CLUBS: 1

17 CLUBS OF 31 ADDED 1 OR MORE NEW MEMBERS

GENDER DISTRIBUTION

MALE 728 (60.52%)  
FEMALE 475 (39.48%)

DROPPED MEMBERS

DECEASED	19
CLUB CANCELLED	9
OTHER	88
<b>TOTAL</b>	<b>116</b>

[CLICK HERE FOR CUMULATIVE MEMBERSHIP DATA](#)

TOTAL FAMILY UNIT MEMBERS	0
FAMILY MEMBERS PAYING HALF DUES	0